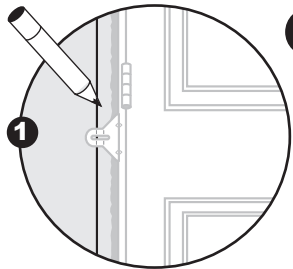




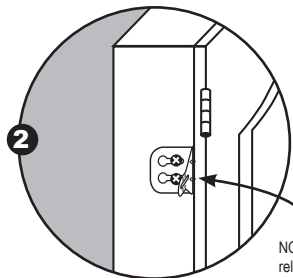
INTERIOR DOOR

Installation Instructions



1 MARK IT

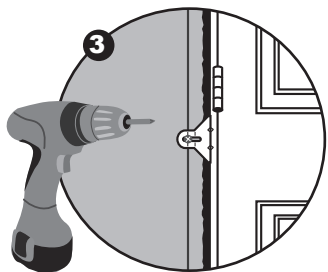
Using a 6' or 4' level, draw a vertical plumb line on the drywall 1/2" in from the rough opening. This line must be on the hinge side and in the room the door swings into.



2 ATTACH IT

Screw brackets to back of door frame using the 1/2" screws provided. Install brackets below each hinge and even with the edge of the door frame. Repeat on the knob side of the door, starting 12" down from the top, 2" above the latch hole and 6-8" up from the bottom. The final bracket is recommended for the top, on doors 30" and wider. The door is now ready to insert in the rough opening.

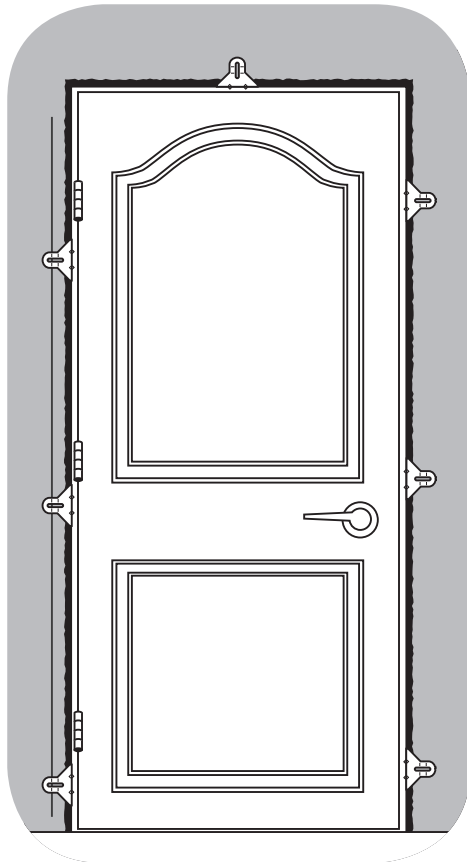
NOTE: Edge stops are releasable for non-drywall installations.



3 HANG IT

Starting at the top hinge, match up one of the lines on the bracket with the level line drawn in step one. Screw door to the wall using the drywall screws provided.

Work your way down the hinge side of the door, making sure to use the same line for each of the 3 hinge brackets. Next, check the clearance between the frame and the door on the top and knob side. Take care to make sure they are equal. Starting at the top again, continue working your way down the door. Keep the clearance between the frame and door equal, as you screw the door to the wall with the drywall screws.

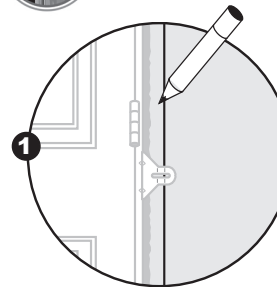


Visit: ezhangdoor.com for more installation tips and to view our online installation videos



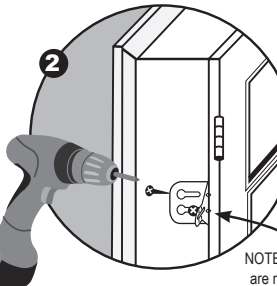
PREMIUM INTERIOR AND EXTERIOR DOOR

Installation Instructions



1 MARK IT

Using a 6' or 4' level, draw a vertical plumb line on the wall 1/2" in from the rough opening. This line must be on the hinge side and in the room the door swings into.

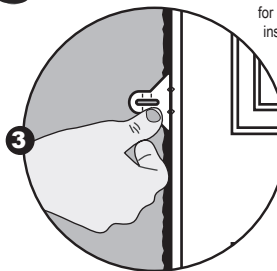


2 ATTACH IT

Install all EZ-HANG brackets to the back of the door frame using the 1/2" screws provided where you would normally use wood shims.

Slightly loosen the screws just enough to remove the bracket from the door frame. You will be re-installing the brackets over the screwheads after you set the door into the opening.

Set the door as per any other manufacturers instructions from the exterior of the building. Temporarily fasten in place from the outside.

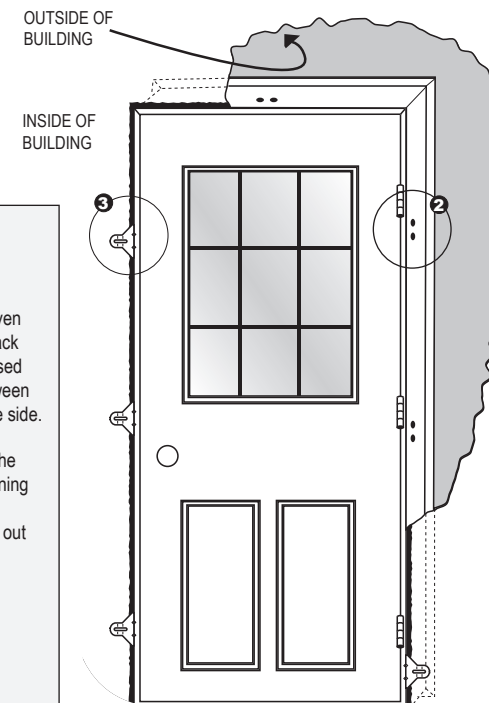


NOTE: Edge stops are releasable for non-drywall installations.

3 HANG IT

From inside the building, re-install the EZ-HANG brackets over the screw heads and press firmly against the wall. Be sure the plumb line is in the same spot on all the brackets by the hinges. Install drywall screws through all brackets into the wall, adjust door clearances as needed.

Finish installation by completing exterior fastening and any long screws through hinges provided or recommended by the door manufacturer.



FOR PREMIUM INSTALLATION:

- a** In addition to the normal seven locations, attach 4 on the back side of the jamb. For increased strength, place them in between the brackets on the opposite side.
- b** Remove the 4 brackets on the back side of the jamb by turning the screws back 1/4 to a 1/2 turn, then slide the brackets out through the keyhole slots.
- c** Install door as per normal instructions. Re-install 4 removed brackets from backside over keyhole slots and fasten to wall.

Visit: ezhangdoor.com for more installation tips and to view our online installation videos